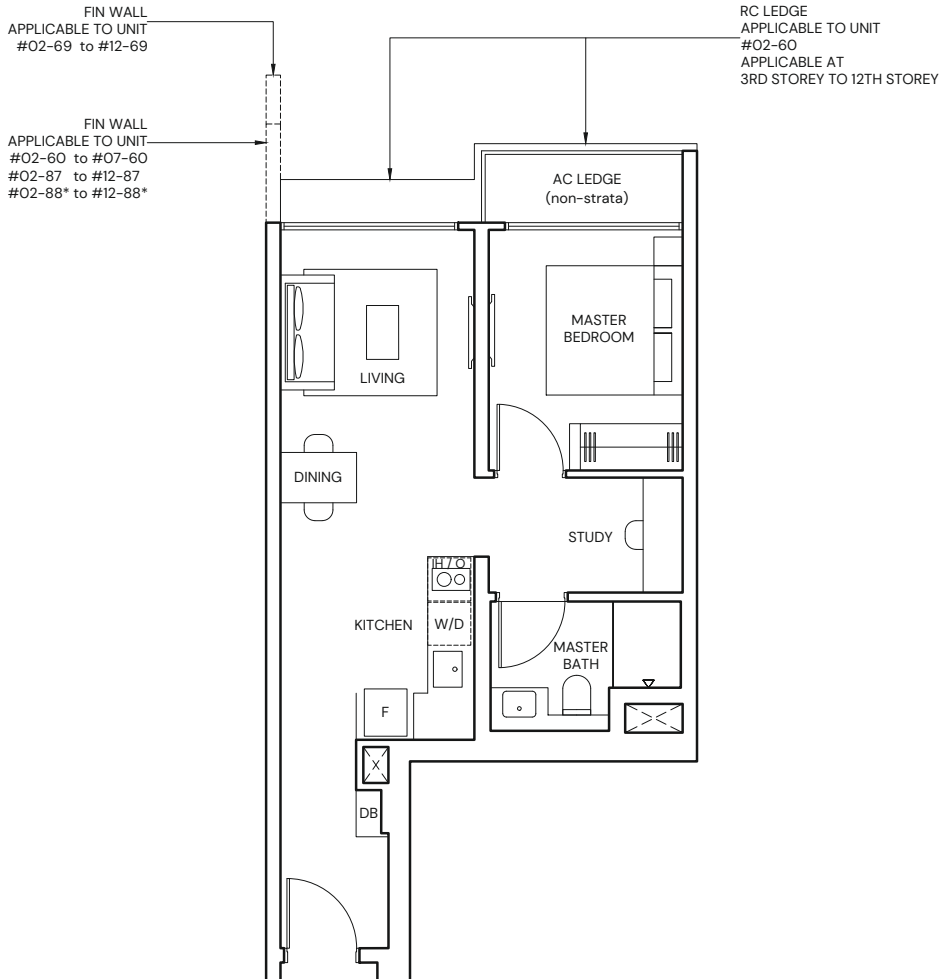


1-BEDROOM + STUDY

TYPE AS1

47sqm / 506 sqft

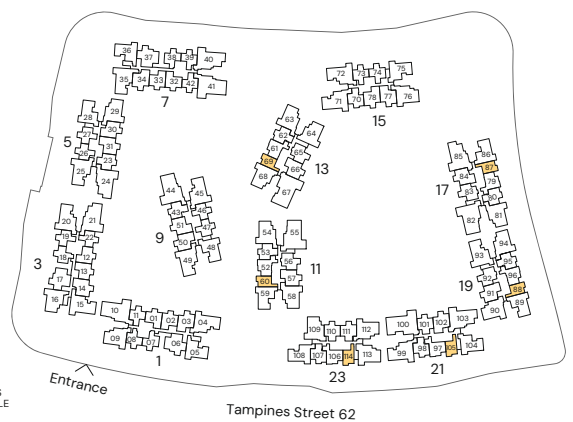
BLK 11 #02-60 to #07-60 BLK 19 #02-88* to #12-88*
 BLK 13 #02-69 to #12-69 BLK 21 #02-105 to #12-105
 BLK 17 #02-87 to #12-87 BLK 23 #02-114 to #12-114



* Mirrored Unit



Area includes Private Enclosed Space (PES) or Balcony, where applicable. All AC ledges and RC ledges (non-load bearing) are excluded from strata area. The plans are subjected to change as may be required by relevant authorities. All areas and measurements stated herein as approximate and subject to final survey.



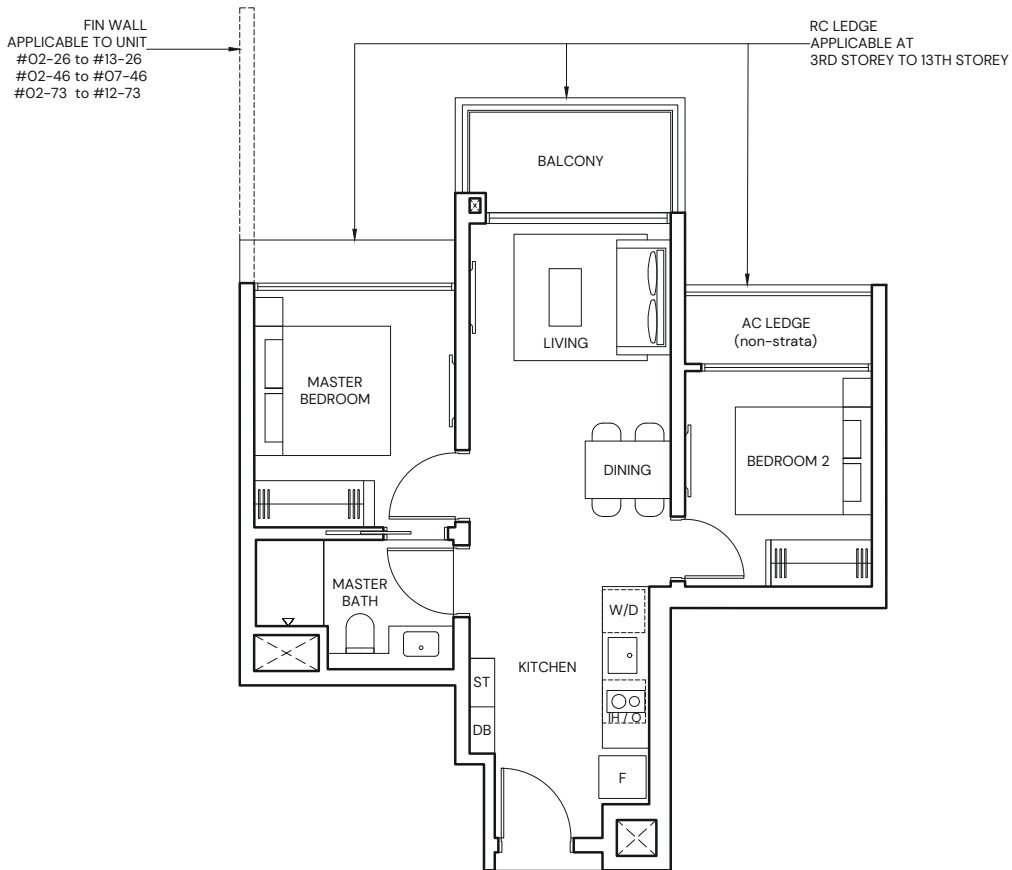
2-BEDROOM

TYPE B3

55 sqm / 592 sqft

BLK 5 #02-26 to #13-26
 BLK 5 #02-27* to #13-27*
 BLK 9 #02-46 to #07-46

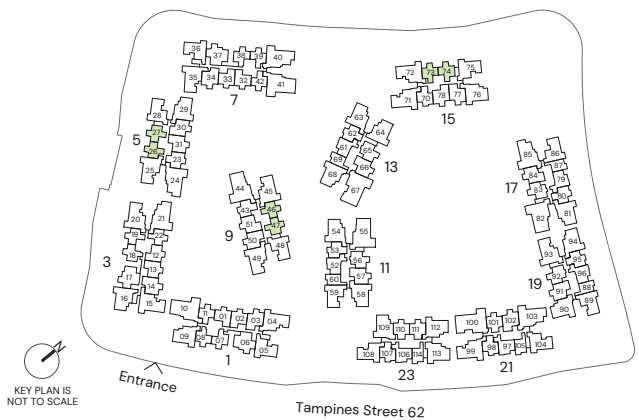
BLK 9 #02-47* to #07-47*
 BLK 15 #02-73 to #12-73
 BLK 15 #02-74* to #12-74*



* Mirrored Unit



Area includes Private Enclosed Space (PES) or Balcony, where applicable. All AC ledges and RC ledges (non-load bearing) are excluded from strata area. The plans are subjected to change as may be required by relevant authorities. All areas and measurements stated herein as approximate and subject to final survey.



2-BEDROOM PREMIUM

TYPE BP2

63 sqm / 678 sqft

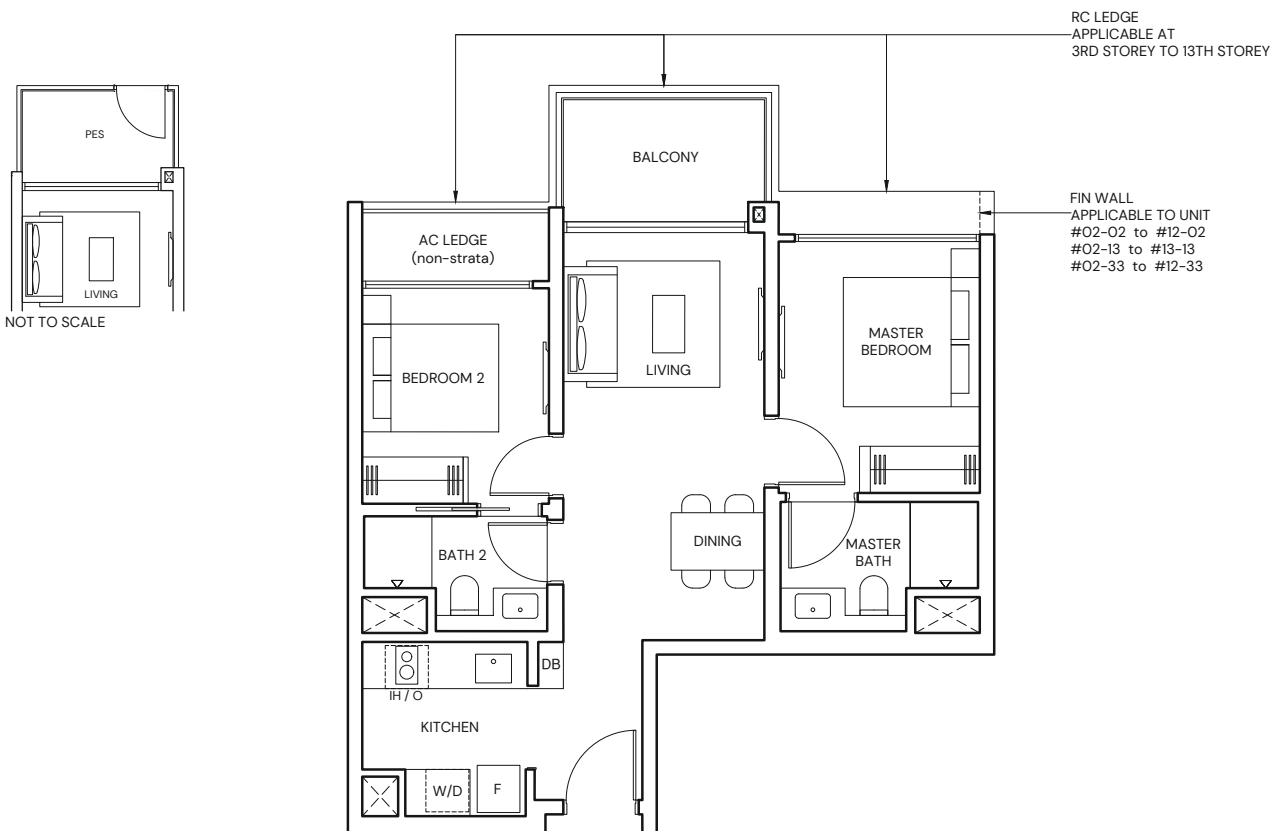
BLK 1 #03-01* to #12-01*
BLK 1 #03-02 to #12-02
BLK 3 #03-12* to #13-12*

BLK 3 #03-13 to #13-13
BLK 7 #03-32* to #12-32*
BLK 7 #03-33 to #12-33

TYPE BP2(p)

63 sqm / 678 sqft

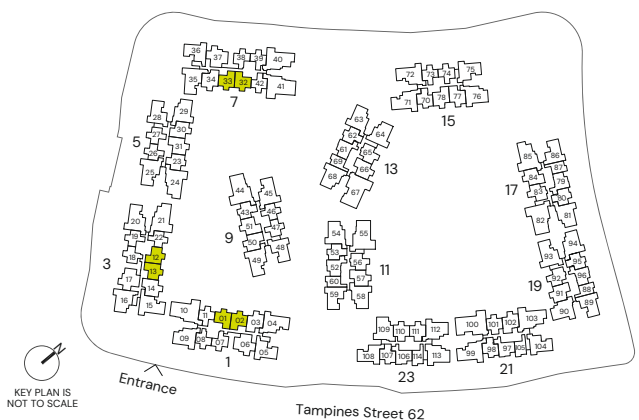
BLK 1 #02-01* BLK 3 #02-13
BLK 1 #02-02 BLK 7 #02-32*
BLK 3 #02-12* BLK 7 #02-33



* Mirrored Unit



Area includes Private Enclosed Space (PES) or Balcony, where applicable. All AC ledges and RC ledges (non-load bearing) are excluded from strata area. The plans are subjected to change as may be required by relevant authorities. All areas and measurements stated herein as approximate and subject to final survey.



2-BEDROOM PREMIUM + STUDY

TYPE BPS1

71 sqm / 764 sqft

BLK 1 #03-03 to #12-03
 BLK 5 #03-30* to #13-30*
 BLK 5 #03-31 to #13-31
 BLK 9 #03-50* to #08-50*

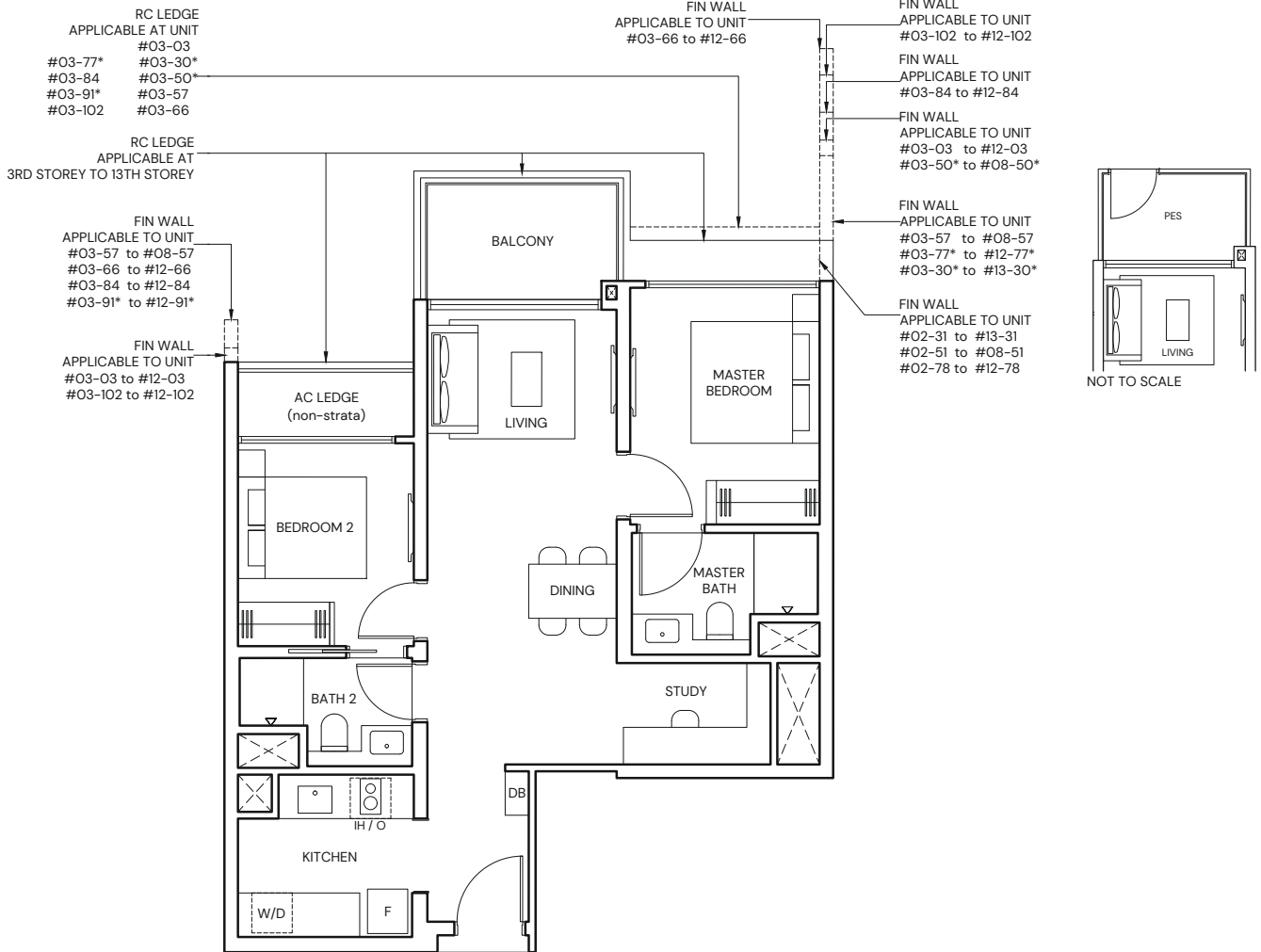
BLK 9 #03-51 to #08-51
 BLK 11 #03-57 to #08-57
 BLK 13 #03-66 to #12-66
 BLK 15 #03-77* to #12-77*

BLK 15 #03-78 to #12-78
 BLK 17 #03-84 to #12-84
 BLK 19 #03-91* to #12-91*
 BLK 21 #03-102 to #12-102

TYPE BPS1(p)

71 sqm / 764 sqft

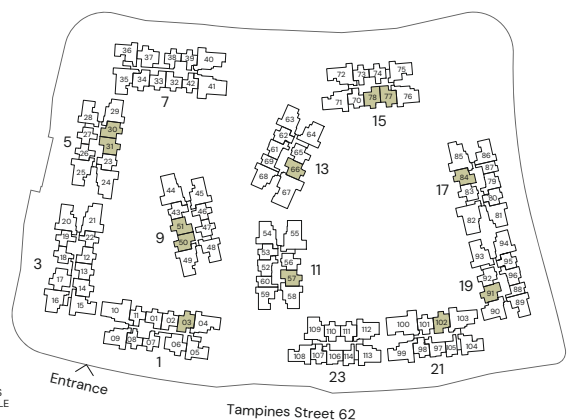
BLK 5 #02-31
 BLK 9 #02-51
 BLK 15 #02-78



* Mirrored Unit



Area includes Private Enclosed Space (PES) or Balcony, where applicable. All AC ledges and RC ledges (non-load bearing) are excluded from strata area. The plans are subjected to change as may be required by relevant authorities. All areas and measurements stated herein as approximate and subject to final survey.



3-BEDROOM

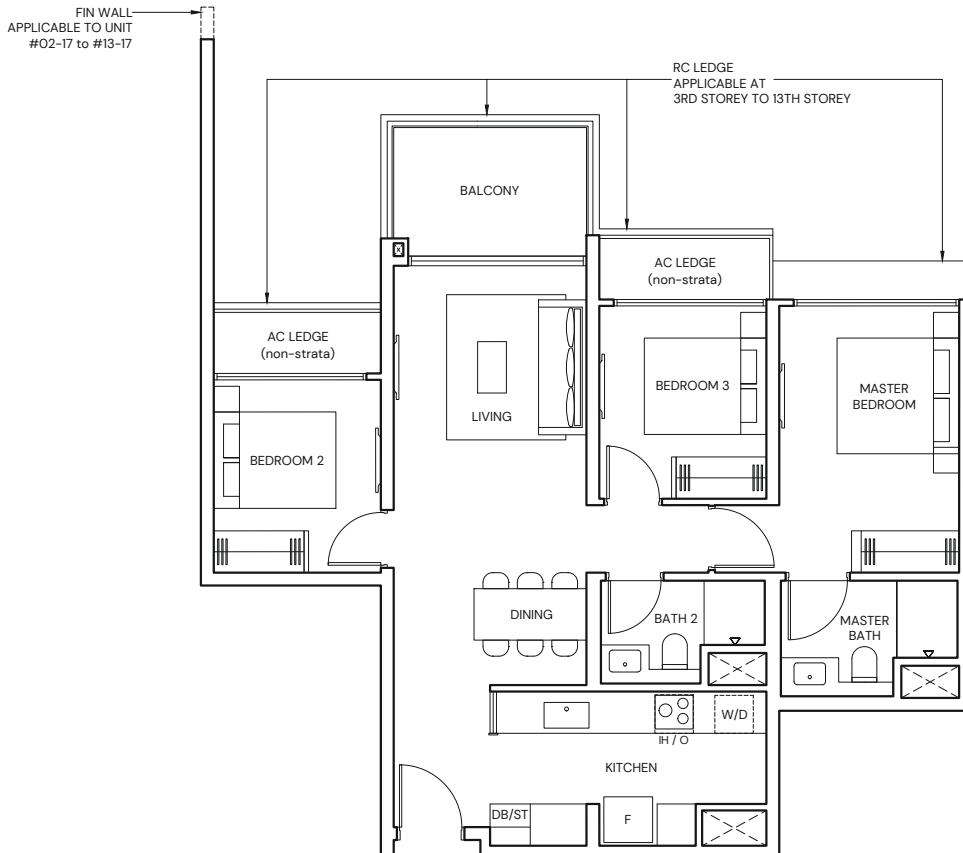
TYPE C1

86 sqm / 926 sqft

BLK 1 #02-06 to #12-06

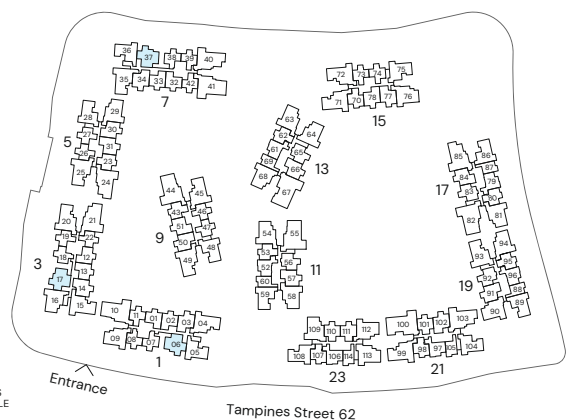
BLK 3 #02-17 to #13-17

BLK 7 #02-37 to #12-37



Area includes Private Enclosed Space (PES) or Balcony, where applicable. All AC ledges and RC ledges (non-load bearing) are excluded from strata area. The plans are subjected to change as may be required by relevant authorities. All areas and measurements stated herein as approximate and subject to final survey.

KEY PLAN IS NOT TO SCALE



3-BEDROOM PREMIUM

TYPE CP1

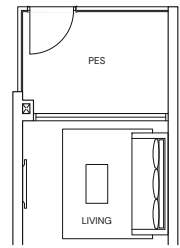
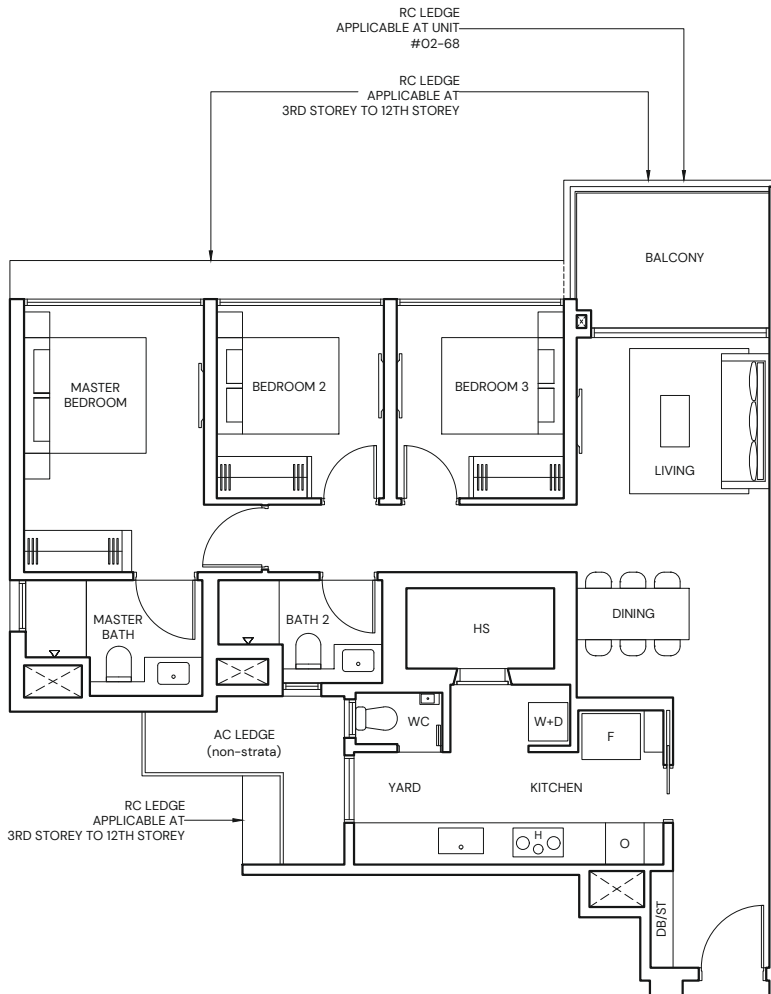
99 sqm / 1066 sqft

BLK 13 #03-64 to #12-64
BLK 13 #02-68 to #12-68

TYPE CP1(p)

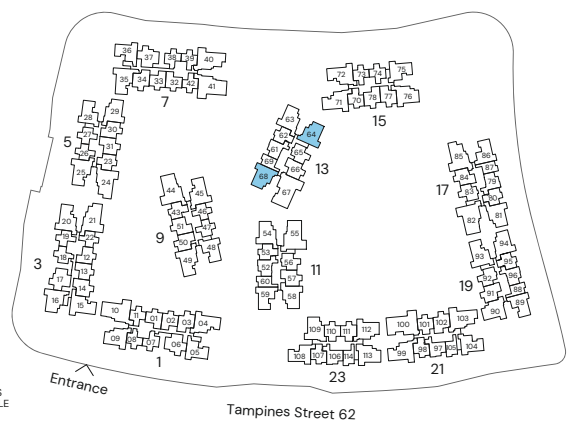
99 sqm / 1066 sqft

BLK 13 #02-64



Area includes Private Enclosed Space (PES) or Balcony, where applicable. All AC ledges and RC ledges (non-load bearing) are excluded from strata area. The plans are subjected to change as may be required by relevant authorities. All areas and measurements stated herein as approximate and subject to final survey.

KEY PLAN IS NOT TO SCALE



3-BEDROOM PREMIUM + STUDY

TYPE CPS2

108 sqm / 1163 sqft

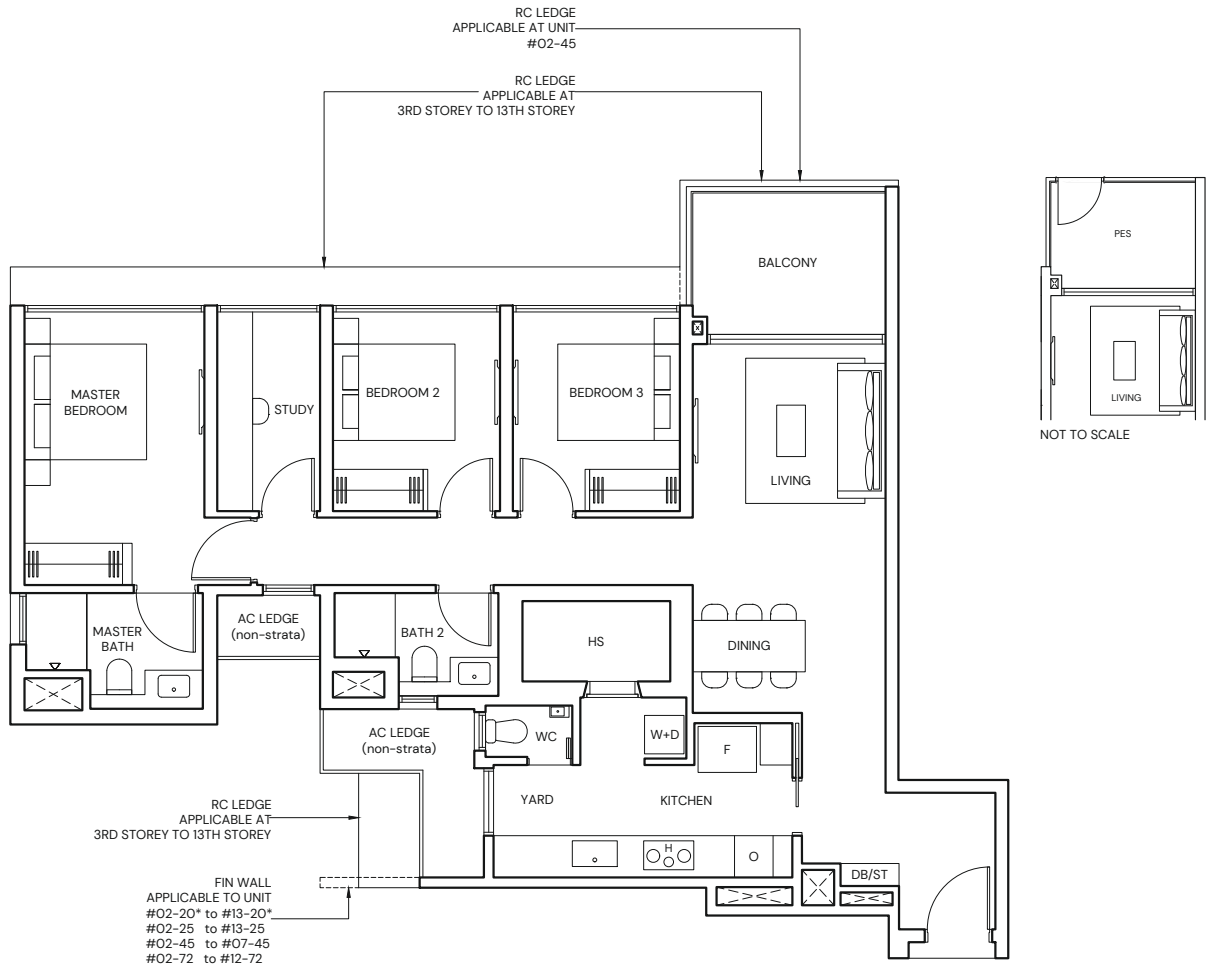
BLK 1 #03-04* to #12-04*
BLK 3 #02-20* to #13-20*

BLK 5 #02-25 to #13-25
BLK 9 #02-45 to #07-45
BLK 15 #02-72 to #12-72

TYPE CPS2(p)

108 sqm / 1163 sqft

BLK 1 #02-04*

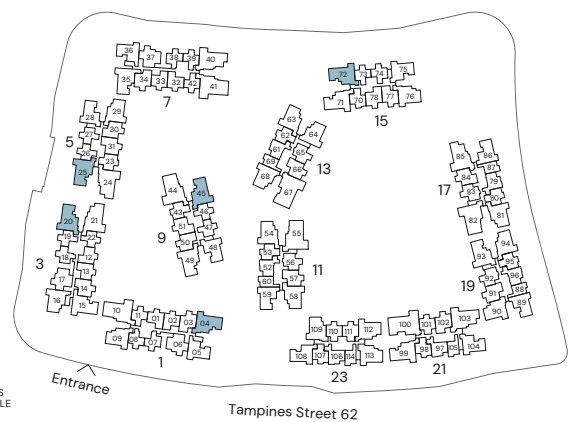


* Mirrored Unit



Area includes Private Enclosed Space (PES) or Balcony, where applicable. All AC ledges and RC ledges (non-load bearing) are excluded from strata area. The plans are subjected to change as may be required by relevant authorities. All areas and measurements stated herein as approximate and subject to final survey.

KEY PLAN IS NOT TO SCALE



4-BEDROOM

TYPE D1

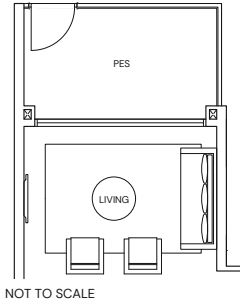
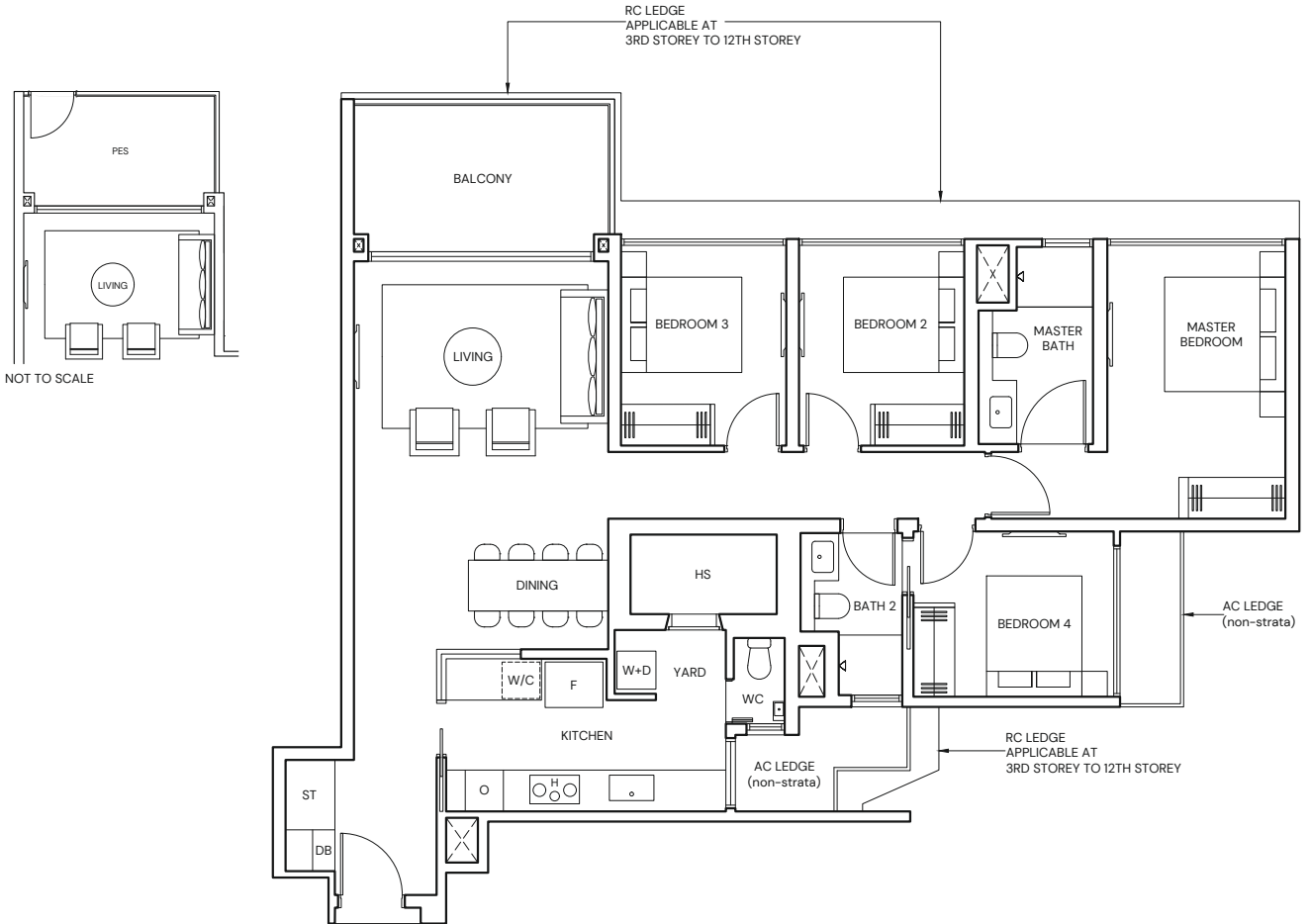
124 sqm / 1335 sqft

BLK 21 #03-103 to #12-103

TYPE D1(p)

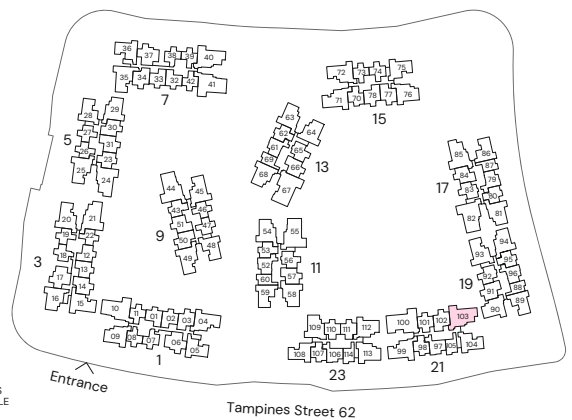
124 sqm / 1335 sqft

BLK 21 #02-103



Area includes Private Enclosed Space (PES) or Balcony, where applicable. All AC ledges and RC ledges (non-load bearing) are excluded from strata area. The plans are subjected to change as may be required by relevant authorities. All areas and measurements stated herein as approximate and subject to final survey.

KEY PLAN IS NOT TO SCALE



4-BEDROOM PREMIUM

TYPE DP2

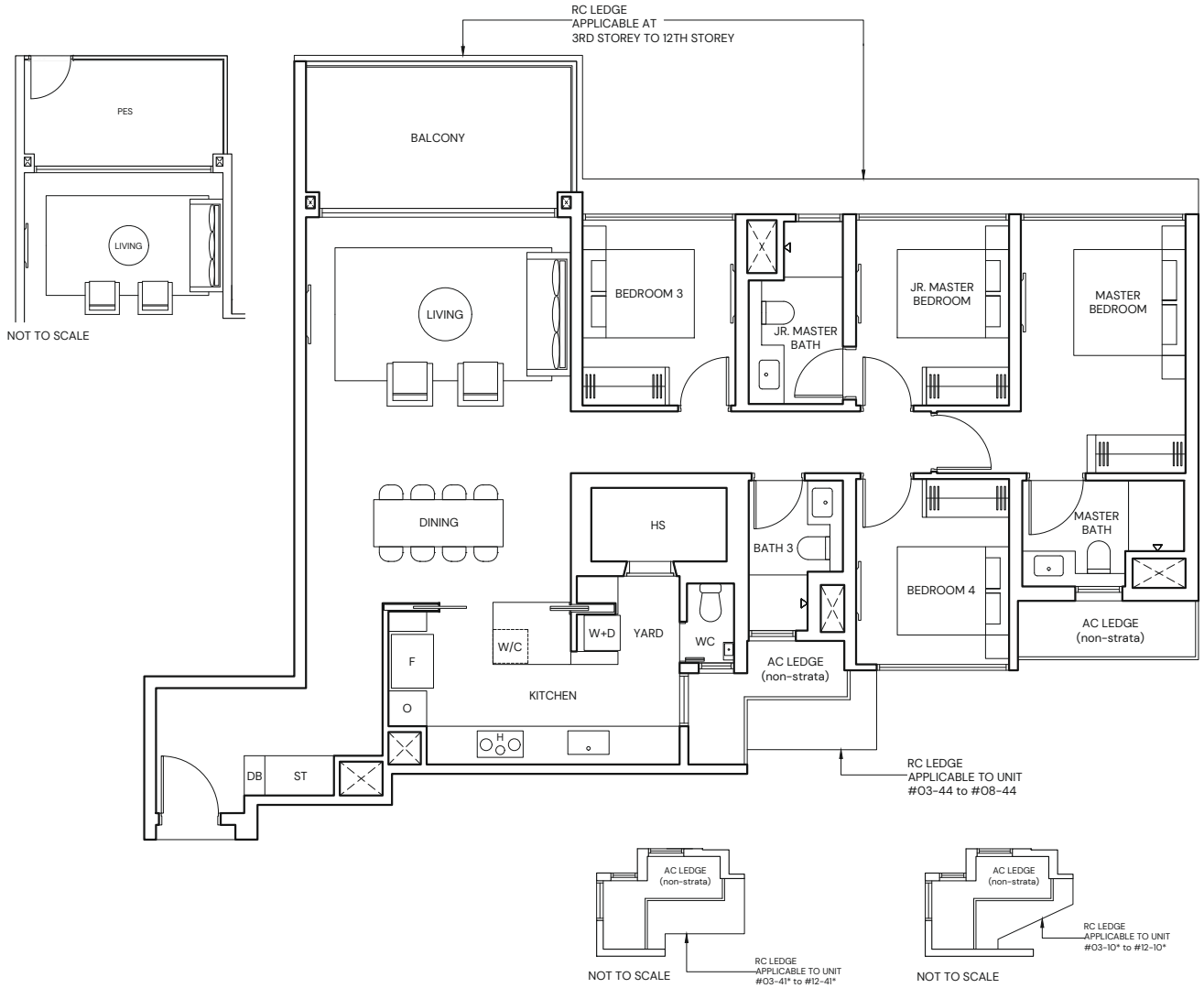
139 sqm / 1496 sqft

BLK 1 #03-10* to #12-10*
 BLK 7 #03-41* to #12-41*
 BLK 9 #03-44 to #08-44

TYPE DP2(p)

139 sqm / 1496 sqft

BLK 1 #02-10*
 BLK 7 #02-41*
 BLK 9 #02-44



* Mirrored Unit



Area includes Private Enclosed Space (PES) or Balcony, where applicable. All AC ledges and RC ledges (non-load bearing) are excluded from strata area. The plans are subjected to change as may be required by relevant authorities. All areas and measurements stated herein as approximate and subject to final survey.



KEY PLAN IS NOT TO SCALE

5-BEDROOM PREMIUM

TYPE E1

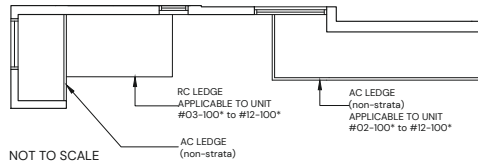
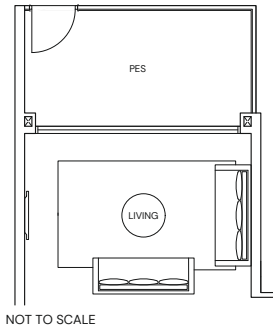
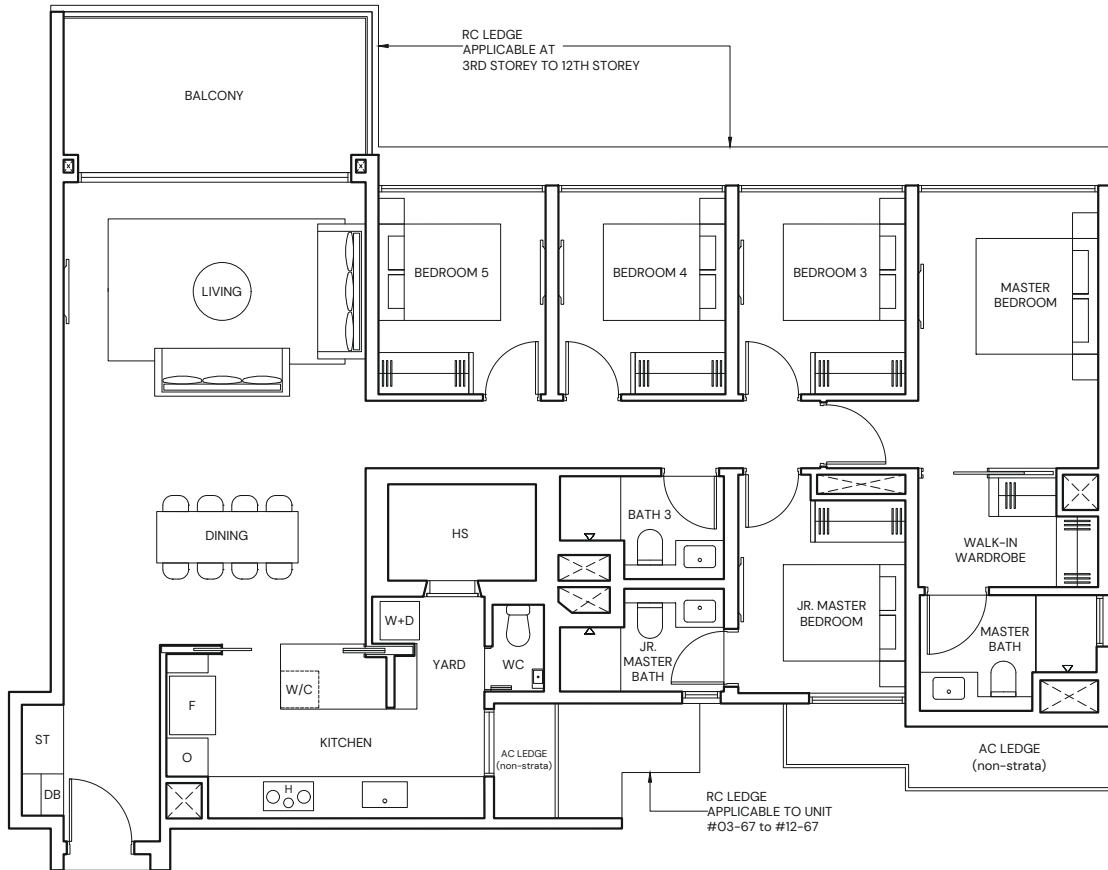
156 sqm / 1679 sqft

BLK 13 #03-67 to #12-67
BLK 21 #03-100* to #12-100*

TYPE E1(p)

156 sqm / 1679 sqft

BLK 13 #02-67
BLK 21 #02-100*



* Mirrored Unit



Area includes Private Enclosed Space (PES) or Balcony, where applicable. All AC ledges and RC ledges (non-load bearing) are excluded from strata area. The plans are subjected to change as may be required by relevant authorities. All areas and measurements stated herein as approximate and subject to final survey.

